

6011 SHAKESPEARE RD, COLUMBIA, SC

**±15,065 SF**

**FOR LEASE**

**CRANE AND  
OFFICE BUILDING**

Office Building  
±3,542 SF

Crane Building  
±11,523 SF

11

10



**SOUTHEAST**  
INDUSTRIAL PROPERTIES

**LEASE RATE:**

**\$7.50**  
PSF NNN

[VIRTUAL TOUR](#)

[VIEW LISTING](#)

#### PROPERTY HIGHLIGHTS

- 2 buildings totaling ±15,065 SF
- ±11,523 SF available at building 10
  - ±4,826 SF crane bldg & ±6,697 SF office, meeting & lab space
- ±3,542 SF available at office building 11
- Zoning: M-1
- Truck Court: 2 drive-in doors (bldg 10)
- Crane: 50-ton crane (bldg 10)
- Clear height: 9' in office | 38' in crane (bldg 10)
- HVAC: Warehouse heated, office heated/cooled (bldg 10) | Office heated/cooled (bldg 11)

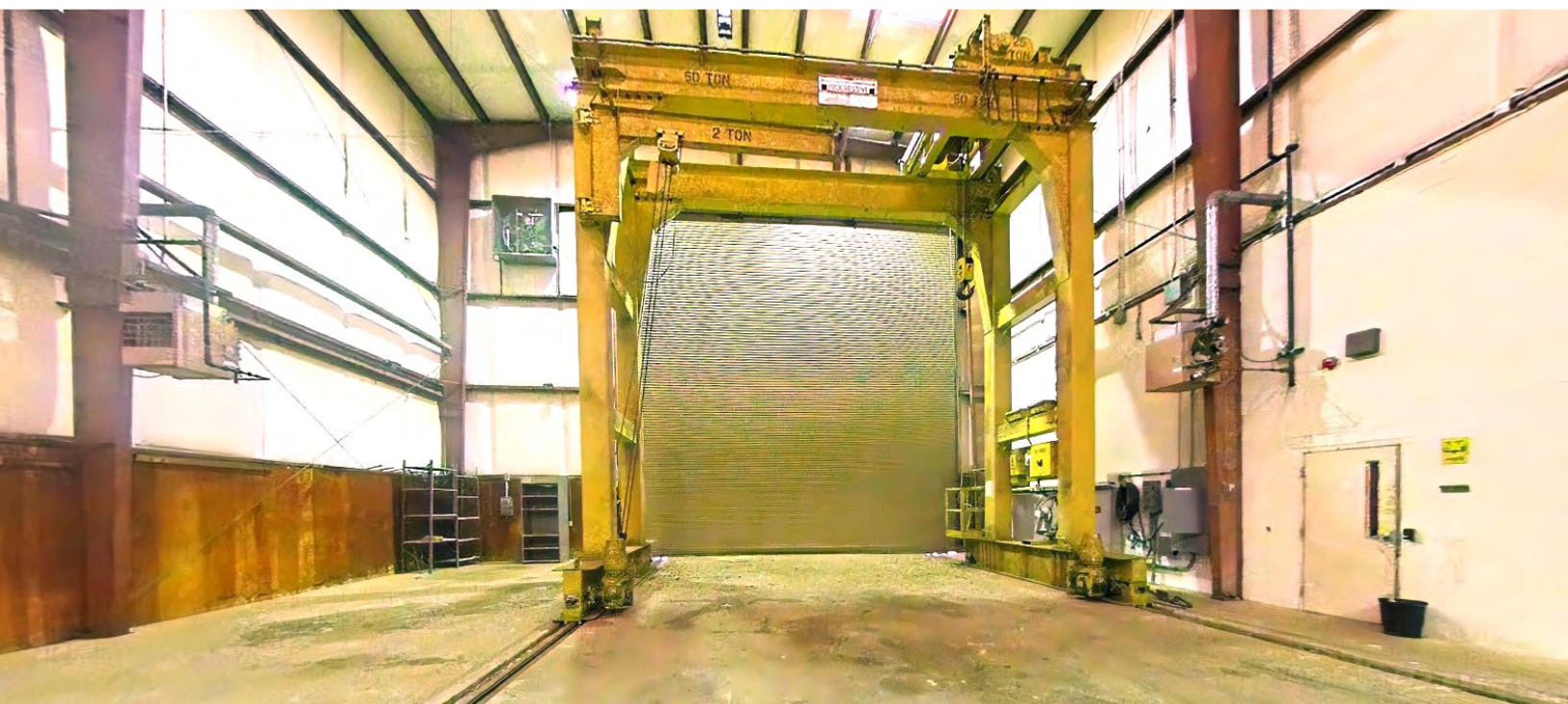
**Colliers**

**CHUCK SALLEY, SIOR**  
Managing Director  
+1 803 401 4266  
chuck.salley@colliers.com

**THOMAS BEARD, SIOR**  
Vice President  
+1 803 401 4247  
thomas.beard@colliers.com

**JOHN PEEBLES, SIOR**  
Senior Brokerage Associate  
+1 803 401 4226  
john.peebles@colliers.com

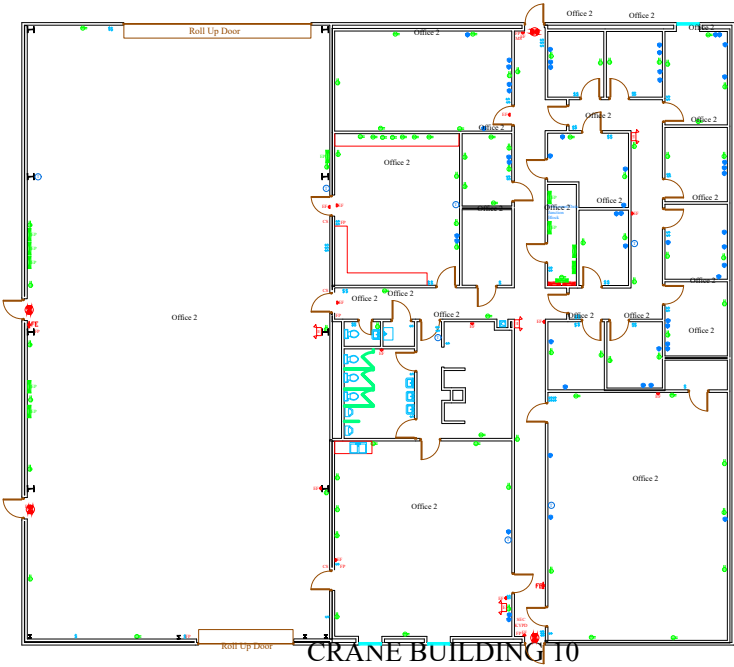
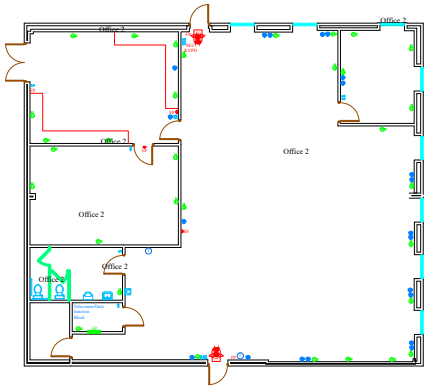




**FOR LEASE** | SHAKESPEARE INDUSTRIAL PARK

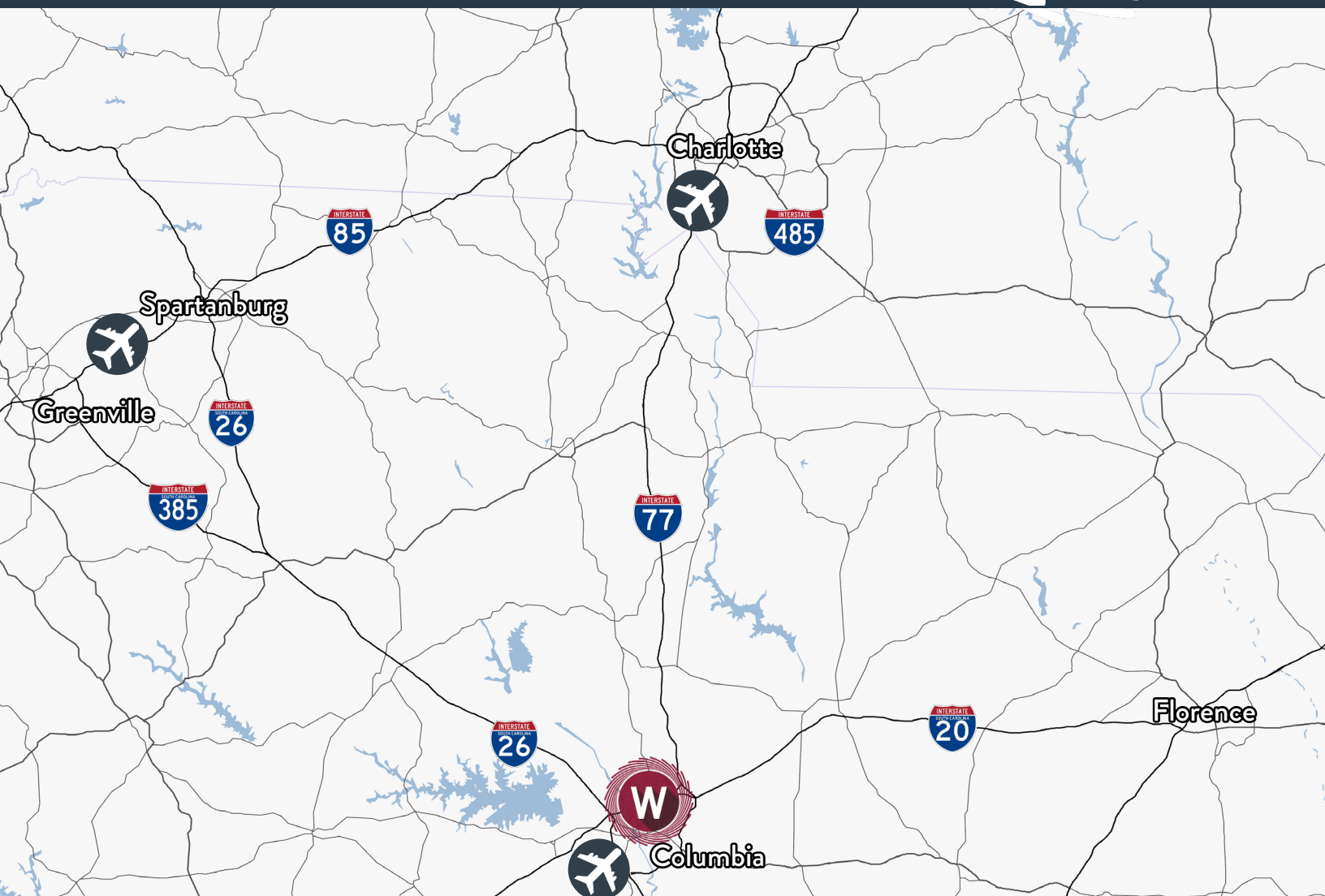
FLOOR PLANS

OFFICE  
BUILDING 11



Space Assessment	
Space Description	SF
CRANE BUILDING 10	11523
OFFICE BUILDING 11	3542
Total SF	15065





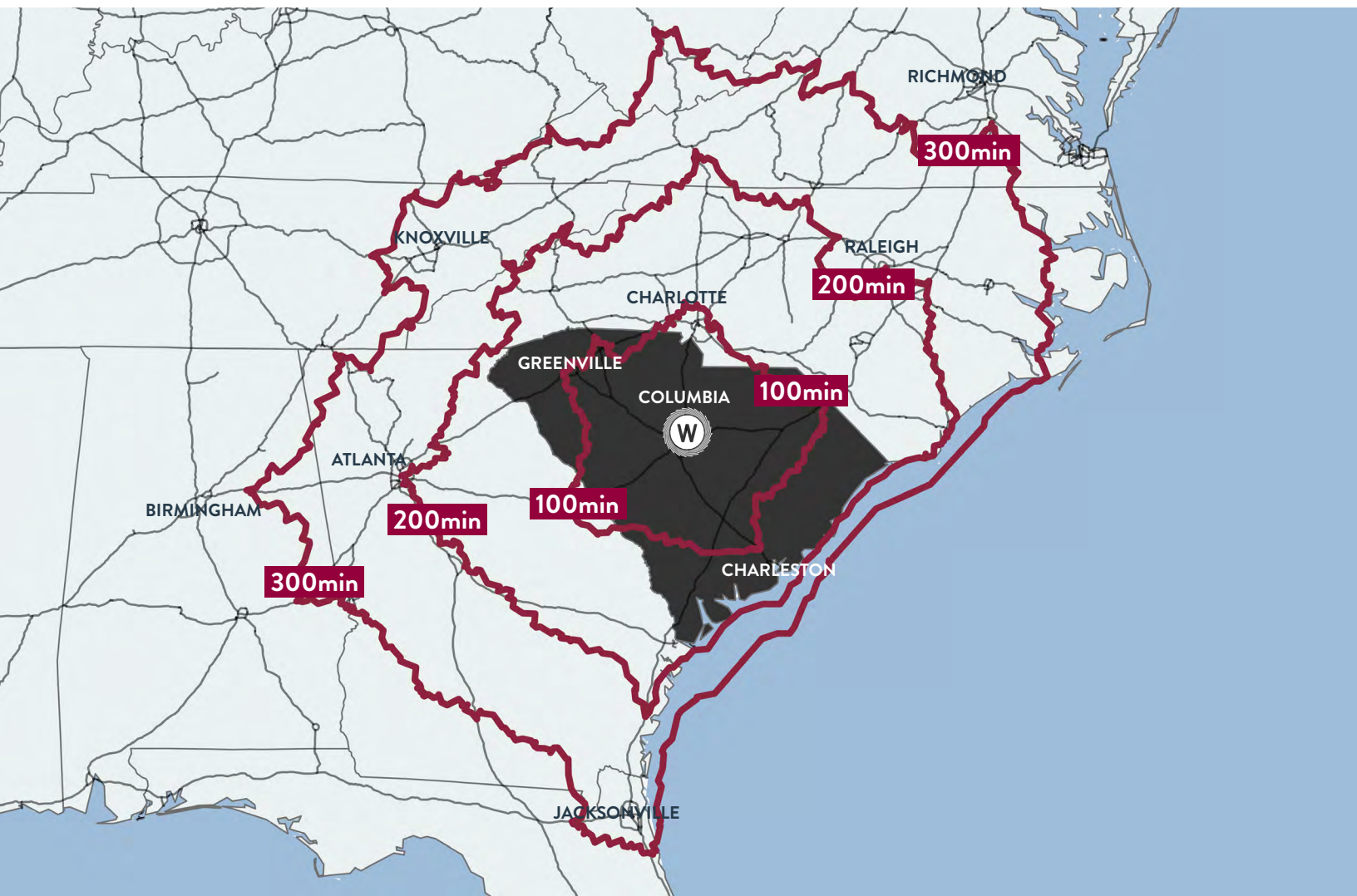
## THE AREA

Located in Columbia, the site is situated in the central part of South Carolina, midway between Atlanta and Charlotte via Interstate 20 and Interstate 77.

## DISTANCE

Interstate 20	±2.36 miles
Interstate 77	±3.2 miles
Interstate 26	±10.3 miles
Columbia Metropolitan Airport	±17.8 miles
Charlotte Douglas International Airport	±90.3 miles
North Charleston Terminal Port of Charleston	±113.6 miles









# Colliers

**CHUCK SALLEY, SIOR**  
Managing Director  
+1 803 401 4266  
chuck.salley@colliers.com

**THOMAS BEARD, SIOR**  
Vice President  
+1 803 401 4247  
thomas.beard@colliers.com

**JOHN PEEBLES, SIOR**  
Senior Brokerage Associate  
+1 803 401 4226  
john.peebles@colliers.com

Copyright © 2023 Colliers International. Information herein has been obtained from sources deemed reliable, however its accuracy cannot be guaranteed. The user is required to conduct their own due diligence and verification.



*Providing homes for businesses by finding solutions that create value.*